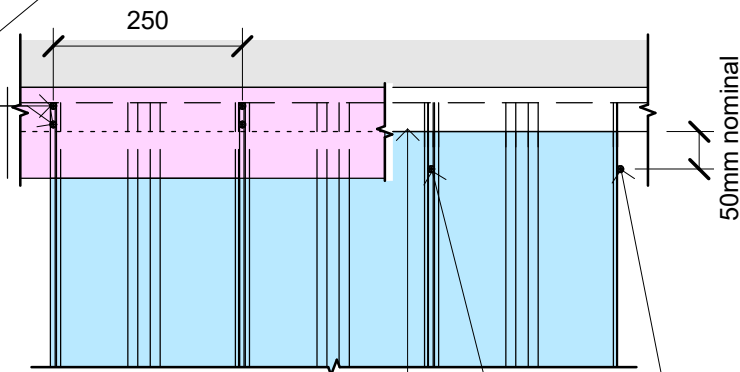


KOROK® C-Track

KOROK® 78mm panels laid in vertical orientation

KOROK® 51mm panels laid in vertical orientation

Fire Rated Plasterboard 13mm Strip x 120mm wide fixed to the KOROK® Top track with pairs of 6g x 22mm screw fixings at 250mm centres. Screw location in line with the 250mm vertical KOROK® panel joints



KOROK® C-track

Note: When omitting screws from the top C-track 10g x 16mm screw fixings are to be placed into the KOROK® panel joints, nominally 50mm below the KOROK® C-Track one side only



KOROK®

Deflection Head Screw Location with Fire Rated Plasterboard

KOROK® Fire Rated Plasterboard Strip Fixing Location

File: korok_deflect.rvt	Date: May 2023		Scale: As indicated
Issue: 23a	Date: May 2023		Scale: As indicated
Reference			

KOROK_KDF_0000a

