

Fire Rated Plasterboard 13mm strip x 120mm wide fixed to the KOROK C-track with pairs of 6g x 22mm screw fixings at 250mm centres. Screw location in line with the 250mm vertical KOROK panel joints

120mm x 13mm fire rated plasterboard

KOROK® fire flashing

10g x 16mm TEK Philips drive wafer head screws at 250mm centres into panel face

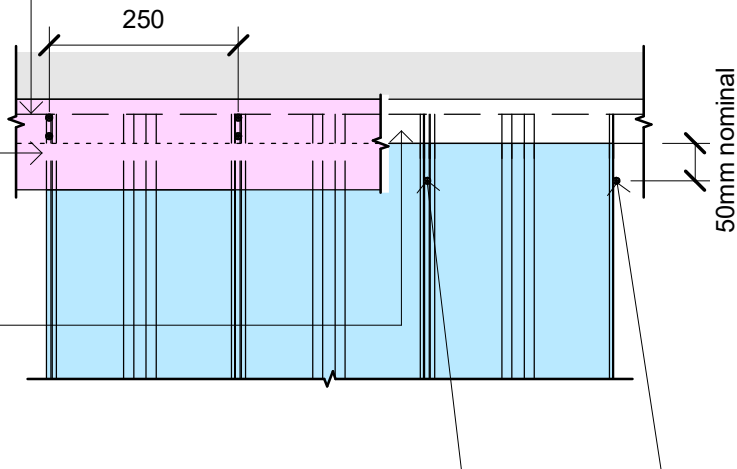
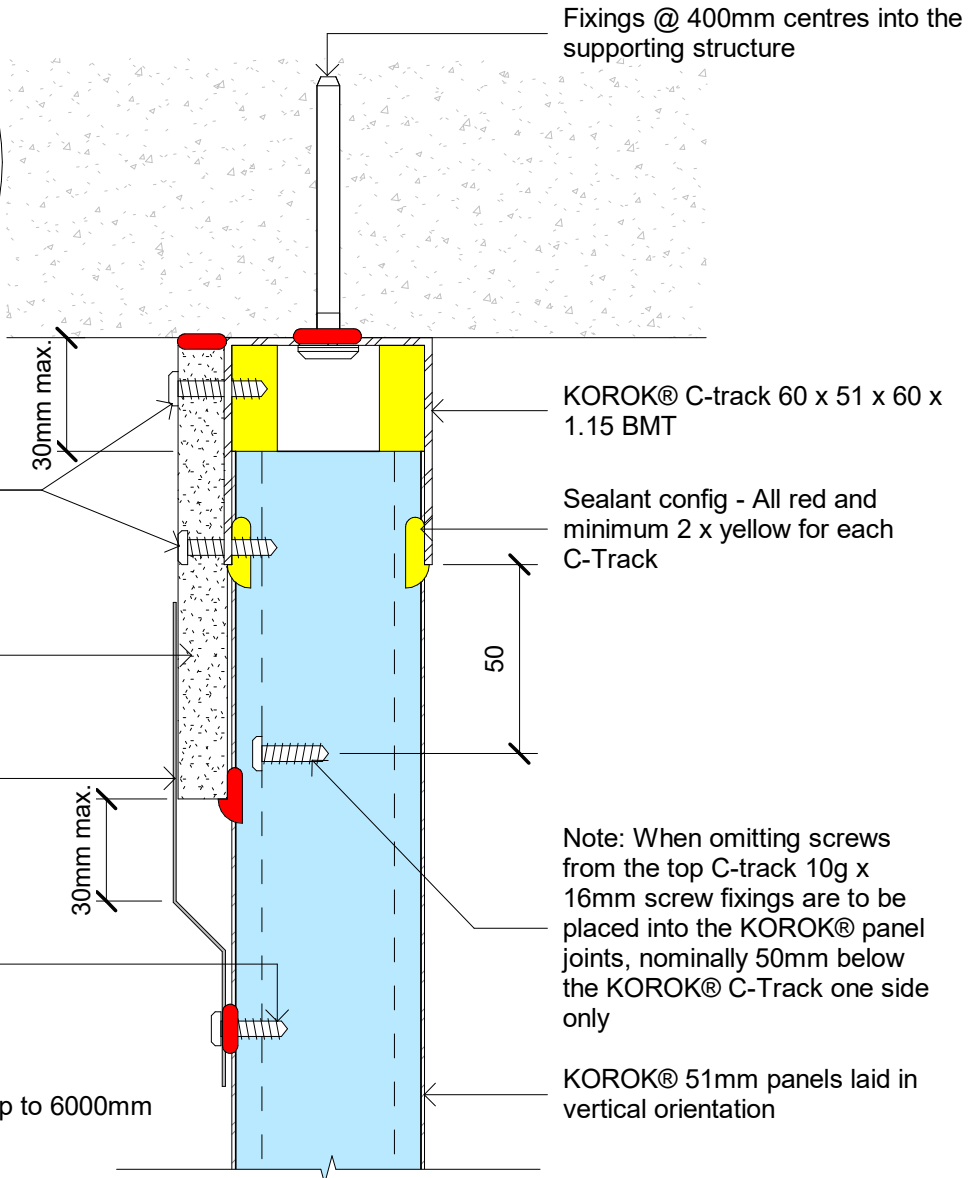
KOROK® 51mm panel head detail FRR -/60/60, unsupported spans of up to 6000mm

KOROK® fire flashing not shown for clarity

Fire Rated Plasterboard 13mm Strip x 120mm wide fixed to the KOROK® Top track with pairs of 6g x 22mm screw fixings at 250mm centres. Screw location in line with the 250mm vertical KOROK® panel joints

KOROK® C-track 60 x 51 x 60 1.15 BMT

Note: When omitting screws from the top C-track 10g x 16mm screw fixings are to be placed into the KOROK® panel joints, nominally 50mm below the KOROK® C-Track one side only



All Dimensions are to be site checked before construction and installation



**KOROK®**

Deflection Head 30mm

KOROK® 51mm Panel deflection head detail 30mm gap -/60/60

File: korok_deflect.rvt		
Issue: 23a	Date: May 2023	Scale: As indicated
Reference		

KOROK\_KDF\_51060\_017

