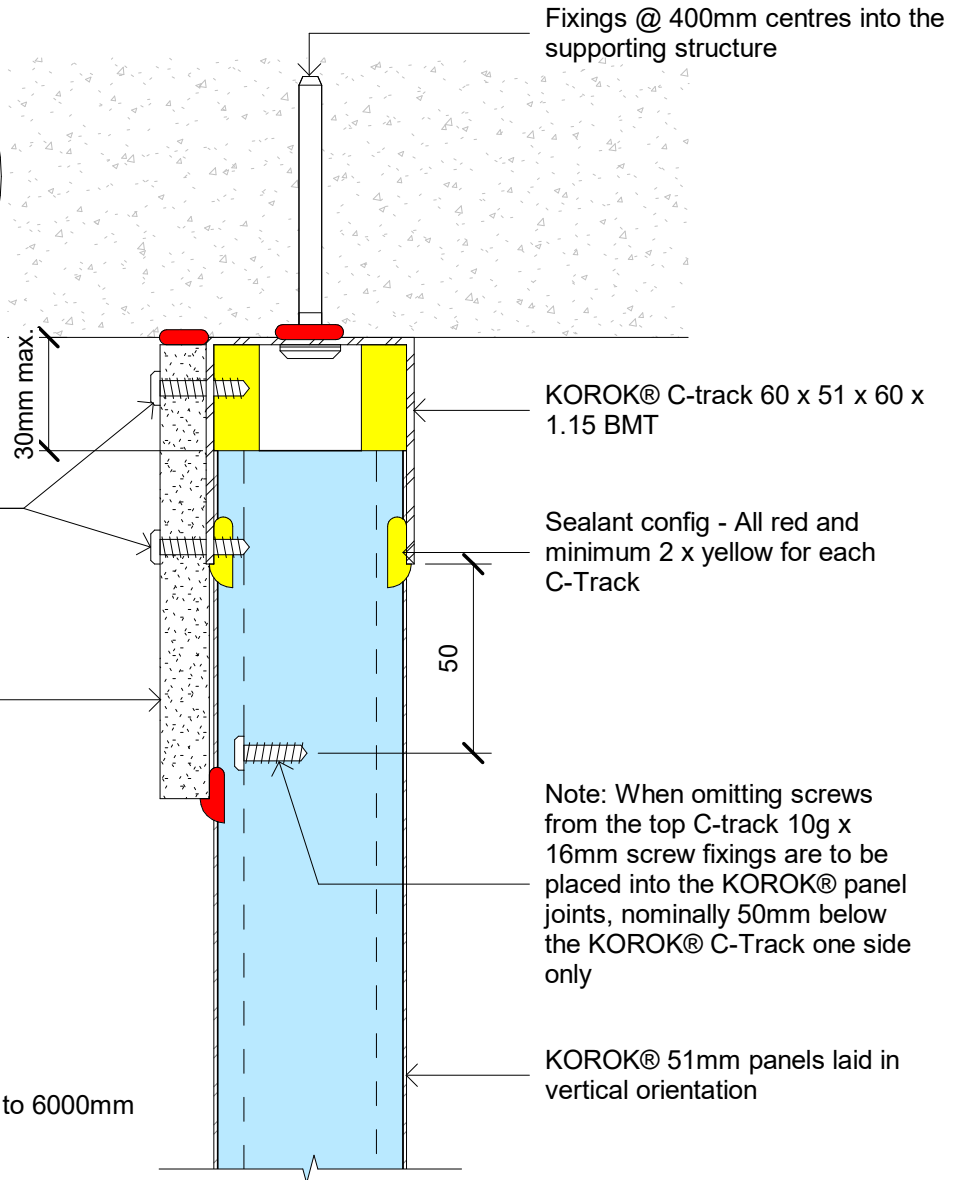


Fire Rated Plasterboard 13mm strip x 120mm wide fixed to the KOROK C-track with pairs of 6g x 22mm screw fixings at 250mm centres. Screw location in line with the 250mm vertical KOROK panel joints

120mm x 13mm fire rated plasterboard

KOROK® 51mm panel head detail FRR -/60/60, unsupported spans of up to 6000mm

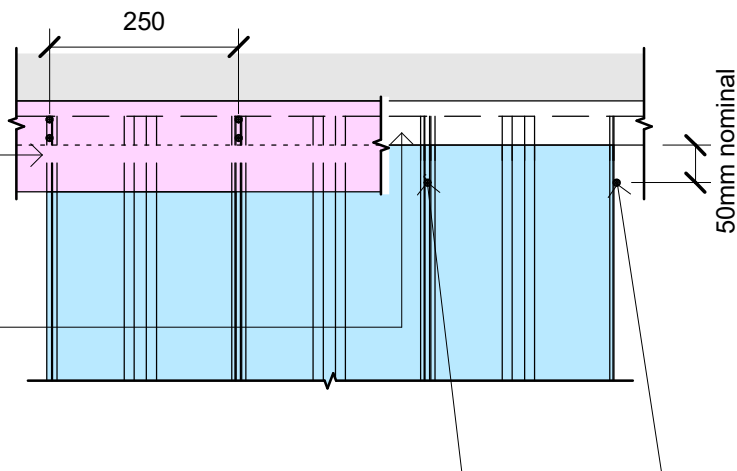


Note: When omitting screws from the top C-track 10g x 16mm screw fixings are to be placed into the KOROK® panel joints, nominally 50mm below the KOROK® C-Track one side only

Fire Rated Plasterboard 13mm Strip x 120mm wide fixed to the KOROK Top track with pairs of 6g x 22mm screw fixings at 250mm centres. Screw location in line with the 250mm vertical KOROK panel joints

KOROK® C-track 60 x 51 x 60 1.15 BMT

Note: When omitting screws from the top C-track 10g x 16mm screw fixings are to be placed into the KOROK® panel joints, nominally 50mm below the KOROK® C-Track one side only



**KOROK®**

Deflection Head 30mm

KOROK® 51mm Panel deflection head detail 30mm gap -/60/60

File: korok_deflect.rvt	Date: May 2023	Scale: As indicated
Issue: 23a		
Reference		

KOROK\_KDF\_51060\_017a

